



SINGLE PLANE INTAKE MANIFOLDS FOR INDY HEADS



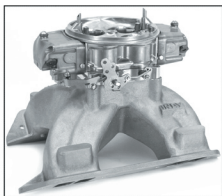
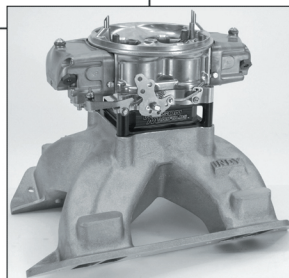
The newly designed 440-3X wedge manifold is a perfect example of Indy meeting the customers needs and concerns. Naturally when Indy produced higher horsepower, larger volume heads, larger cubic inch engines evolved. Indy's original single plane manifolds were sufficient until the 600 cubic inch range was breached. Customers wanted an intake manifold that would feed their hungry big cubic inch engines and Indy delivered.

The 440-3X is a large volume single plane 4500 flange wedge intake manifold for R/B height blocks. It was designed exclusively to fill the void for the larger cubic inch engines. As in all Indy products, the 440-3X has versatility. It can also be used as a power upgrade on any well built wedge engine with compatible heads and related components. This manifold also features E.F.I. bosses for those of you wanting to build the ultimate fuel injected race engine.

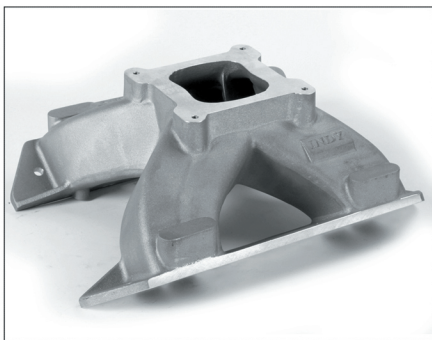
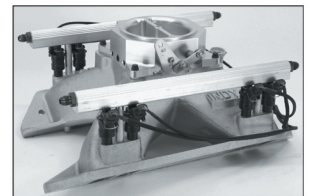
Brand X racers **BEWARE!!**

Part # 440-3X RB Intake Pictured

- Utilizes Max Wedge 440-1 intake port opening with 4500 flange.
- Fuel injection bosses cast into manifold for simple E.F.I. conversion.
- 440-3X measures 9.00" from end rails of block to top of carb flange or manifold.

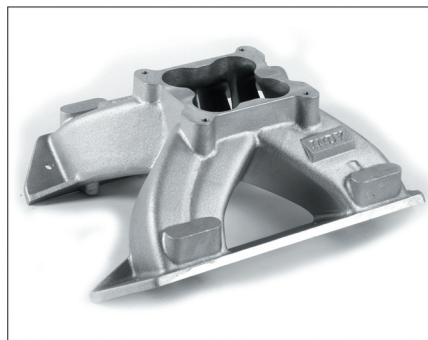


Indy has taken into consideration all of the possibilities when it comes to air fuel delivery in designing our induction systems. Our wide variety of intake manifolds for the wedge engine incorporates anything from the tried and true carburetion system to the new age fuel injection systems. We can supply a bare manifold with all the bosses necessary for you to create the induction system of your dreams or we can assemble the unit complete and ship you a bolt on application.



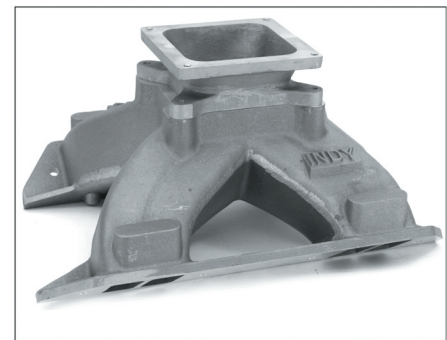
Part # 440-2 RB Intake

- Utilizes Max Wedge 440-1 intake port opening with 4150 carb flange.
- Part # 400-2 available for B engines with same specifications.
- Fuel injection bosses cast into manifold for simple E.F.I. conversions.
- 440-2 measures 6.75" from end rails of block to top of carb flange of manifold.
- 400-2 measures 6.50" from end rails of block to top of carb flange of manifold.



Part # 440-3 RB Intake

- Utilizes Max Wedge 440-1 intake port opening with 4500 carb flange.
- Part # 400-3 available for B engines with same specifications.
- Fuel injection bosses cast into manifold for simple E.F.I. conversions.
- 440-3 measures 6.75" from end rails of block to top of carb flange of manifold.
- 400-3 measures 6.50" from end rails of block to top of carb flange of manifold.



Part # 440-2 RB with 440-2A

- Utilizes Max Wedge 440-1 intake port opening with 4150 carb flange.
- 440-2A 2" riser from 4150 to 4500 flange added. Best horsepower producing combination for 4500 if hood clearance is not an issue. 12-15 HP gain.
- Part # 400-2 and 440-2A riser available for B engines with same specifications.
- Fuel injection bosses cast into manifold for simple E.F.I. conversions.

Hemi is a trademark of the Chrysler corporation and is used for identification purposes only

Call: 317-862-3724 Fax: 317-862-6300 Web: indyheads.com Email: techline@indyheads.com

Hemi is a trademark of the Chrysler Corporation and is used for identification purposes only

Not legal for use or sale on pollution controlled vehicles