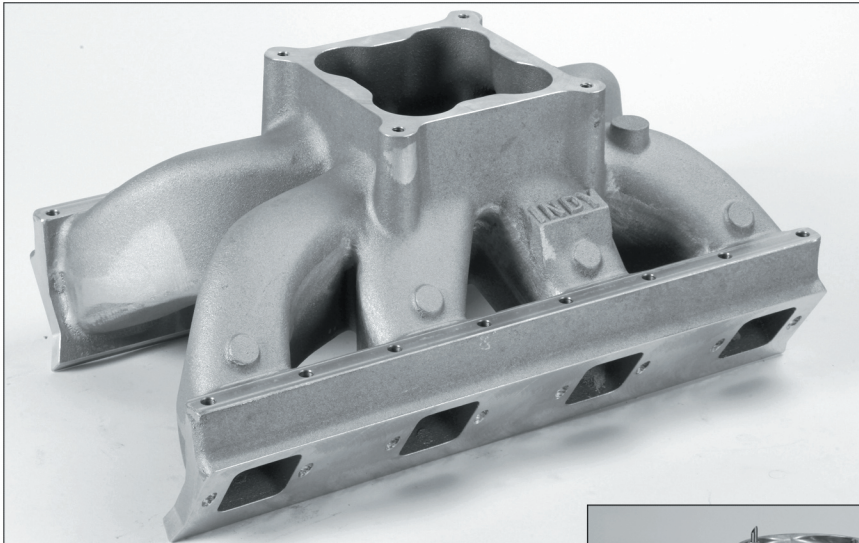




## SINGLE PLANE INTAKE MANIFOLDS FOR INDY HEADS



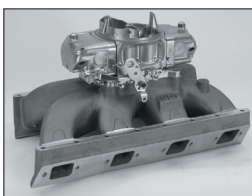
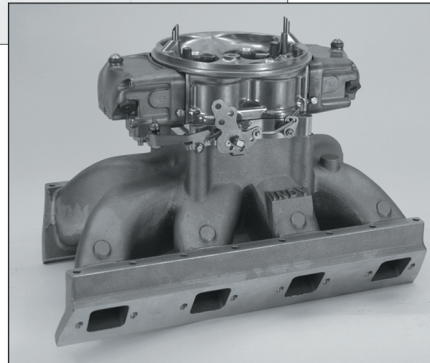
In 2000 Indy Cylinder Head finished the design and R&D of the largest volume Dominator only single plane four barrel manifold ever made for the Chrysler Hemi Engine. It has proved effective in any size cubic inch engine using high compression, roller cam and hi flow heads. Transition from 4500 carb base to runner entrance has a cast in radius for even fuel air distribution.

The manifold measures 9.25" tall from end rail of block to carb base (hood clearance may be a problem). The 426-4 can be ordered with the original 16 bolt mounting pattern or a wider 10 bolt pattern for large

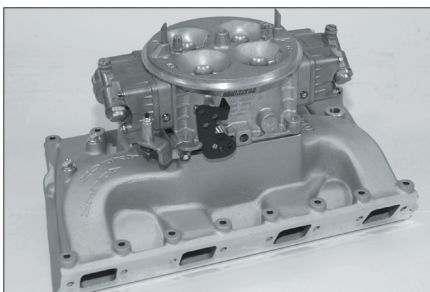
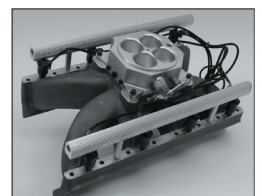
port size heads used on the Indy 600 cubic inch Legend Engines. Dyno tests and track R&D has proved 1000 HP is possible with a 605 Legend using a single 4500 carb (the motor, no bottle). Research and development will continue at Indy Cylinder Head until the original Elephant regains its supremacy.

### Part # 426-4 Legend 4500 Intake

- Manifold will fit the original 16 bolt Chrysler 426 Hemi heads, 10 bolt pattern for bigger ports available.
- Fuel Injection Bosses cast into manifold for simple E.F.I. conversions.
- 426-4 measures 9.25" from end rails of block to top of carb flange or manifold.
- Manufactured for 4500 dominator only

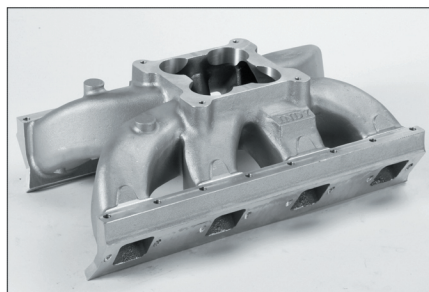


Indy has taken into consideration all of the possibilities when it comes to air fuel delivery in designing our induction systems. Our wide variety of intake manifolds for the Legend engine incorporates anything from the tried and true carburetion system to the new age fuel injection systems. We can supply a bare manifold with all the bosses necessary for you to create the induction system of your dreams or we can assemble the unit complete and ship you a bolt on application. Visit Indy at [indyheads.com](http://indyheads.com) on the web.



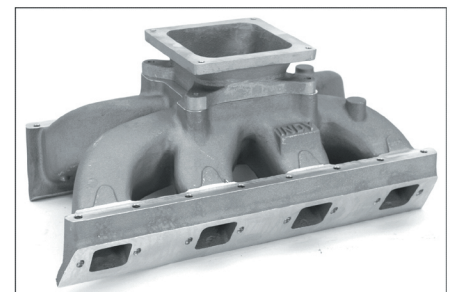
### Part # 426-3D Intake

- Proven 820 HP on pump gas.
- Utilizes 16 intake bolt pattern only.
- 4500 carb flange large plenum volume dual plane for big cubic inch street engines.
- 426-3D measures 5.75" tall from end rails of block to carb flange of manifold.
- Bottom Plate available to keep hot oil off of the bottom of the intake.



### Part # 426-3 Intake

- Utilizes 16 intake bolt pattern with 4500 carb flange.
- Available in 10 intake bolt pattern with same specifications.
- Fuel injection bosses cast into manifold for simple E.F.I. conversions.
- 426-3 measures 7.00" from end rails of block to top of carb flange of manifold.



### Part # 426-2 with 440-2A

- 16 intake bolt pattern with 4150 carb flange.
- 440-2A 2" riser from 4150 to 4500 flange added. Produces more horse power (12 to 15 HP gain) over 426-3 if hood clearance is not an issue.
- Available in 10 intake bolt pattern.
- Fuel injection bosses cast into manifold for simple E.F.I. conversions.