

# NEW 426" STREET HEMI



485HP @ 5800 RPM 510 TORQUE@ 3300 PRM

NEW MOPAR MEGA HEMI BLOCK

4.250 BORE X 3.750 STROKE

NEW EAGLE 3.750 STROKE CRANK-- 8 BOLT FLANGE

NEW EAGLE 6.86 H-BEAM RODS 1.031 PIN

NEW DIAMOND PISTONS 10.00 TO 1

NEW MOPAR PERF 559 IRON HEMI HEADS

2.25/1.94 SS VALVES

MOPAR PERF CHROME VALVE COVERS

INDY 426-27 ROLLER ROCKERS 1.6 x 1.55

COMP CAMS 278CH HYDRAULIC CAM

.504/ .488- .277/ .277- H108

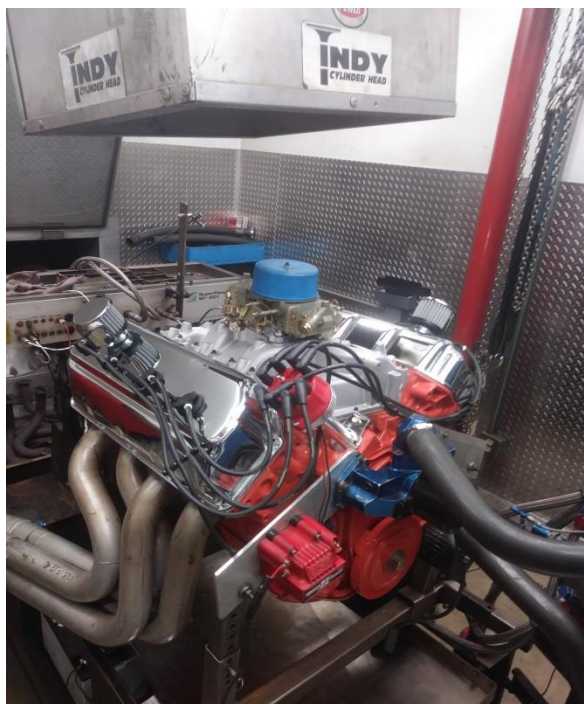
STREET HEMI OIL PAN WITH WINDAGE TRAY

NEW MOPAR PERF 1 X 4 DUAL PLANE INTAKE

750 CFM HOLLEY CARB

MSD PRO BILLET DISTRIBUTOR- ICH BLACK WIRES

92 PUMP GAS



**\$19,995.00 OBO**

**MORE OPTIONS AVAILABLE**